



tessera® FR

Tessera FR tufted carpets are renowned for their aesthetic styling and outstanding performance, even in the most demanding of heavy traffic environments. Tessera FR collection includes contemporary and classic styles to enhance a wide variety of rail vehicle interiors.

Tessera FR is a collection of attractive, hardwearing carpets, offered in various pile constructions and textures, all designed to deliver specific aesthetic and performance benefits. The installation of carpet in a rail vehicle adds significant warmth, comfort and acoustic benefits.

- Durability and appearance retention, made from 100% nylon
- Flexibility for colourisation
- Slip resistance
- Reaction to fire EN 45545-2 : HL2
- Cut to size/shape option
- Available with Pro-Fit backing for quicker installation

Please ensure that 'FR' is clearly noted on all orders.



BROADLOOM CARPET

tessera® alignment FR

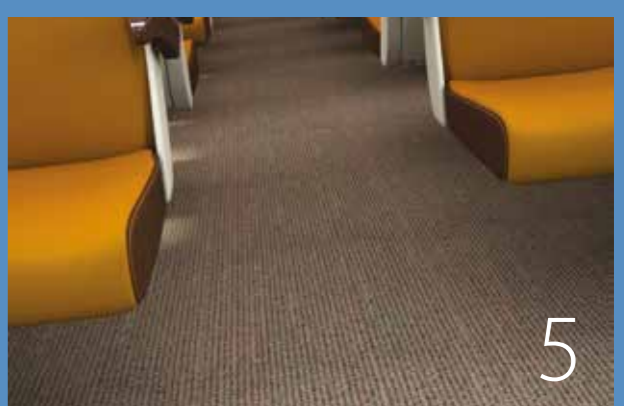
Sophisticated and cleverly textured to complement the most contemporary interior design



3

tessera® helix FR

An understated linear design, combining rich texture and visual appeal



5

tessera® nexus FR

Merging a metallic web overlay with a sophisticated striated ground, Tessera Nexus creates a network of connections



7

tessera® alignment FR

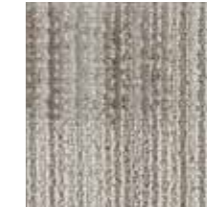
Sophisticated and cleverly textured to complement the most contemporary rail interior design. Tessera Alignment FR is available in 24 colours.



220FR | essence LRV 17



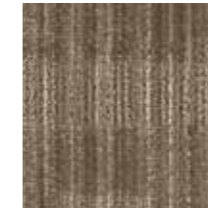
219FR | equinox LRV 24



218FR | luminosity LRV 22



222FR | Galileo LRV 11



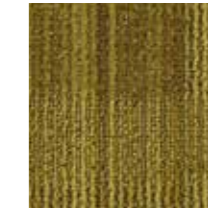
213FR | astral LRV 11



215FR | stellar LRV 6



209FR | celcius LRV 8



221FR | gravity LRV 10



223FR | solstice LRV 5



210FR | climate LRV 8



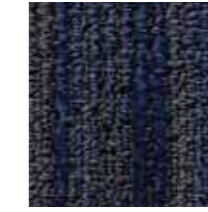
214FR | nocturn LRV 4



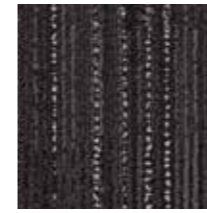
217FR | meteorite LRV 3



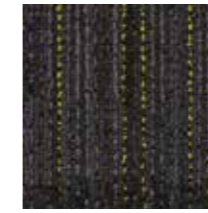
204FR | horizon LRV 4



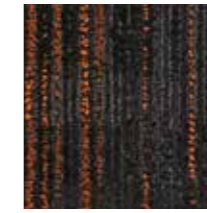
203FR | cyclone LRV 2



239FR | apollo LRV 2



238FR | terrestrial LRV 2



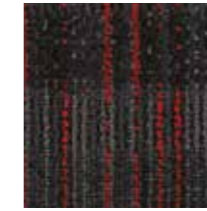
237FR | sunspot LRV 2



202FR | elixir LRV 4



208FR | nucleus LRV 2



244FR | firestar LRV 2



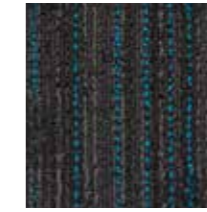
242FR | hologram LRV 2



241FR | north star LRV 2



243FR | cosmic ray LRV 2



240FR | wavelength LRV 2

Description	Tufted multi-height cut and loop pile carpet	
Dimensions	EN-ISO 24341	Roll width 185cm Roll length ≤ 27.5m
Total thickness	ISO 1765	6.0mm ± 10%
Pile weight	ISO 8543	730g/m²
Yarn	100% polyamide	
Collection size	24	
Area of use	Heavy Use	
Impact noise reduction	EN-ISO 717-2	ΔLw = 25 dB
Tested flammability standard	EN 45545-2	HL2*
Slip resistance	EN 13893	μ ≥ 0.30
Body voltage	ISO 6356	< 2 kV

*EN45545-2 testing has been carried out on various different substrates. This is the highest achieved result. Please ask for a full overview of specific results on different substrates by emailing transport@forbo.com
Please note: Digital representations may vary from actual product. Please order a physical sample to see the full effect by emailing: transport@forbo.com
Full technical specifications are available on page 71.

tessera® helix FR

An understated linear design, combining rich texture and visual appeal. Tessera Helix FR is available in 13 colours.



805FR | burnish LRV 12



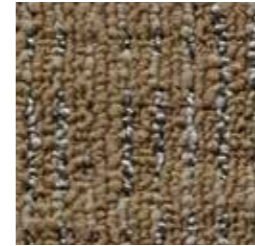
807FR | glaze LRV 14



804FR | taupe LRV 14



806FR | mortar LRV 12



808FR | silica LRV 12



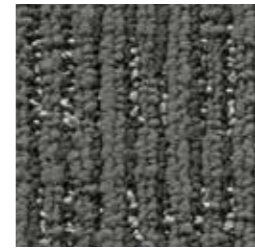
809FR | copper LRV 10



803FR | clay LRV 9



801FR | glass LRV 12



802FR | oxide LRV 9



812FR | marble LRV 7



811FR | cobalt LRV 5



813FR | zircon LRV 10



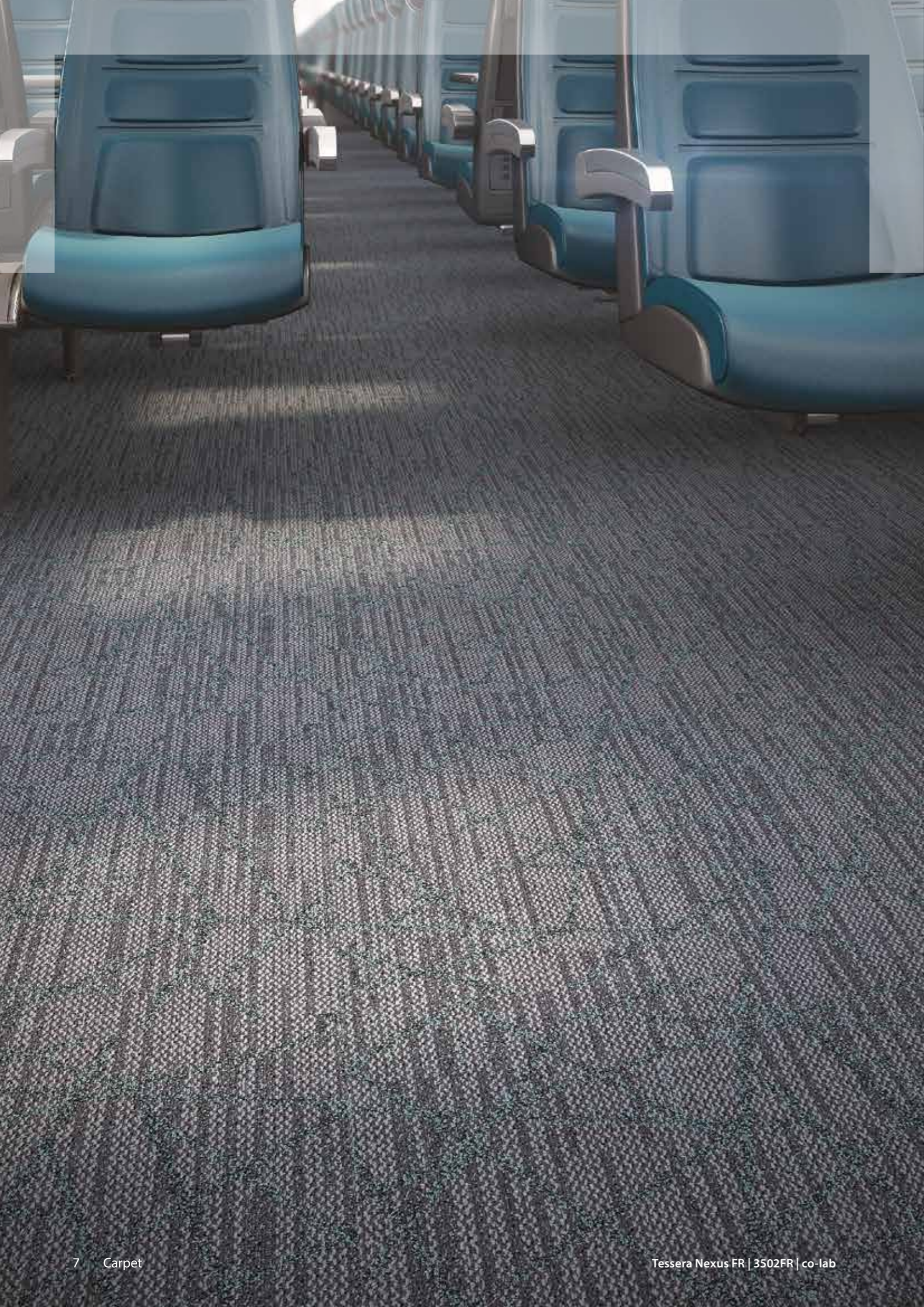
810FR | carbon LRV 5

Description	Tufted multi-height loop pile carpet	
Dimensions	EN-ISO 24341	Roll width 185cm Roll length ≤ 27.5m
Total thickness	ISO 1765	6.0mm ± 10%
Pile weight	ISO 8543	740g/m ²
Yarn	100% polyamide	
Collection size	13	
Area of use	Heavy Use	
Impact noise reduction	EN-ISO 717-2	ΔLw = 26 dB
Tested flammability standard	EN 45545-2	HL2*
Slip resistance	EN 13893	μ ≥ 0.30
Body voltage	ISO 6356	< 2 kV

**EN45545-2 testing has been carried out on various different substrates. This is the highest achieved result. Please ask for a full overview of specific results on different substrates by emailing transport@forbo.com*
Please note: Digital representations may vary from actual product. Please order a physical sample to see the full effect by emailing: transport@forbo.com
Full technical specifications are available on page 71.

tessera[®] nexus FR

Merging a metallic web overlay with a sophisticated striated ground, Tessera Nexus FR creates a network of connections in 9 contemporary colourways.



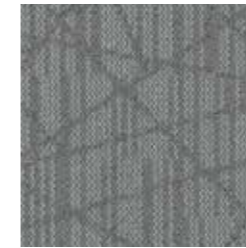
Description	Tufted multi-height loop pile carpet	
Dimensions	EN-ISO 24341	Roll width 185cm Roll length ≤ 27.5m
Total thickness	ISO 1765	5.4mm ± 10%
Pile weight	ISO 8543	515g/m ²
Yarn	100% Invista Antron [®] Lumena polyamide 6.6	
Collection size	9	
Area of use	Heavy Use	
Impact noise reduction	EN-ISO 717-2	ΔLw = 25 dB
Tested flammability standard	EN 45545-2	HL2*
Slip resistance	EN 13893	μ ≥ 0.30
Body voltage	ISO 6356	< 2 kV



3500FR | agenda LRV 21



3501FR | milestone LRV 13



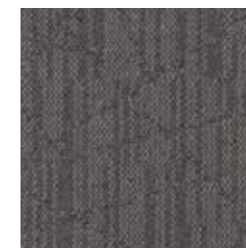
3503FR | engage LRV 19



3507FR | share LRV 12



3502FR | co-lab LRV 9



3504FR | review LRV 12



3506FR | feedback LRV 11



3508FR | groupchat LRV 7



3505FR | refresh LRV 7

**EN45545-2 testing has been carried out on various different substrates. This is the highest achieved result. Please ask for a full overview of specific results on different substrates by emailing transport@forbo.com*

Please note: Digital representations may vary from actual product. Please order a physical sample to see the full effect by emailing: transport@forbo.com

Full technical specifications are available on page 71.

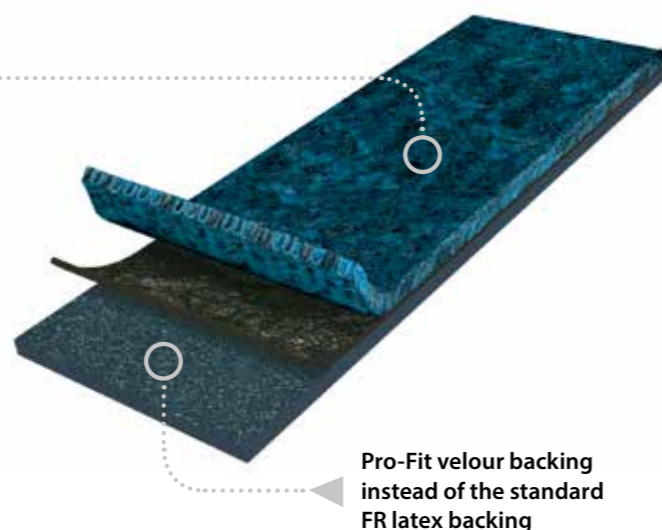
PRO-FIT – THE INNOVATIVE INSTALLATION SYSTEM

Pro-Fit is an adhesive free installation system, improving efficiencies in time, cost and operation throughout the life of the vehicle. It comprises an integral velour backing to the floor covering and a special fire retardant hook tape adhered to the sub-floor.



The Pro-Fit system is available for use with:

- **Coral FR entrance systems**
(Classic FR/Brush FR/Welcome FR)
- **Coral Move FR/Coral Move Vision FR broadloom carpet**
- **Tessera FR broadloom carpet**
(Nexus FR/Helix FR/Alignment FR)



Customers who use this system experience far shorter first installation times (normal adhesive installations require 24 hours drying time). For renewals the advantages are even greater as it is simply 'pull up the old and drop down the new floor covering' that is required. No glue removal, no difficult sanding, no drying time.

These advantages over traditional fully bonded adhesive systems mean cost savings for train operators as a result of:

- **Quicker and easier installation and replacement**
- **No need to wait for the adhesive to dry**
- **No waiting time before the carpet can be walked on**
- **Immediate use of the train after installation**

Please ensure that 'FR Pro-Fit' is clearly noted on all orders.

For example 'Tessera Alignment 219 FR Pro-Fit'. The Pro-Fit velour backing cannot be added to latex backed material after production.

Detailed Pro-Fit installation instructions are available on our website at: www.forbo-flooring.com/transport

